



Plate 1: Selection of grinding stones recovered from the Butcher Works © University of Sheffield. Reproduced by permission

Not available due to copyright

Plate 2: Alfred Williams in his garden in Broomhill, Sheffield © John Dearden



Plate 3: View of cellars below houses on corner of Eyre Lane and Brown Lane © University of Sheffield. Reproduced by permission



Plate 4: Frosted glass panel in Director's office overlooking Brown Lane © University of Sheffield. Reproduced by permission



Plate 5: Architectural wallpaper in Director's office overlooking Brown Lane © University of Sheffield. Reproduced by permission



Plate 6: Detail of anvil block in hand forge © University of Sheffield. Reproduced by permission



Plate 7: Detail of hearth and bellow in hand forge © University of Sheffield. Reproduced by permission



Plate 8: Blocked cart passage following conversion to Caretaker's House © University of Sheffield. Reproduced by permission © University of Sheffield.



Plate 9: View of partitioned workshops on third floor overlooking Eyre Lane © University of Sheffield. Reproduced by permission



Plate 10: View looking north across courtyard to Eyre Lane buildings © University of Sheffield. Reproduced by permission



Plate 11: Cupboards in packing room overlooking courtyard, building D © University of Sheffield. Reproduced by permission



Plate 12: Detail of hand operated pan closet with panelled sides © University of Sheffield. Reproduced by permission



Plate 13: View looking north along Brown Lane, note first floor ventilation grills © University of Sheffield. Reproduced by permission



Plate 14: Courtyard elevation of Brown Lane range, note raised upper levels © University of Sheffield. Reproduced by permission



Plate 15: View of second floor packing rooms overlooking Brown Lane © University of Sheffield.
Reproduced by permission



Plate 16: View of Arundel Street range from corner of Brown Lane © University of Sheffield.
Reproduced by permission



Plate 17: Exterior detailing of cart-passage fronting Arundel Street © University of Sheffield. Reproduced by permission



Plate 18: Courtyard elevation of Arundel Street range, note inverted arches © University of Sheffield. Reproduced by permission



Plate 19: General view of interior of former engine room in Arundel Street range © University of Sheffield. Reproduced by permission



Plate 20: Large open plan workroom on top floor overlooking Arundel Street © University of Sheffield. Reproduced by permission



Plate 21: Courtyard elevation of West range © University of Sheffield. Reproduced by permission



Plate 22: Central fireproof stairwell in West range © University of Sheffield. Reproduced by permission



Plate 23: South grinding workshop with wooden framed troughs on second floor © University of Sheffield. Reproduced by permission



Plate 24: North grinding workshop with concrete troughs on second floor © University of Sheffield. Reproduced by permission



Plate 25: Surviving cutlers bench on third floor of West range © University of Sheffield.
Reproduced by permission



Plate 26: Central courtyard chimney with curved suite of toilets © University of Sheffield.
Reproduced by permission



Plate 27: Chimney flue connecting chimney with former courtyard boilers © University of Sheffield. Reproduced by permission

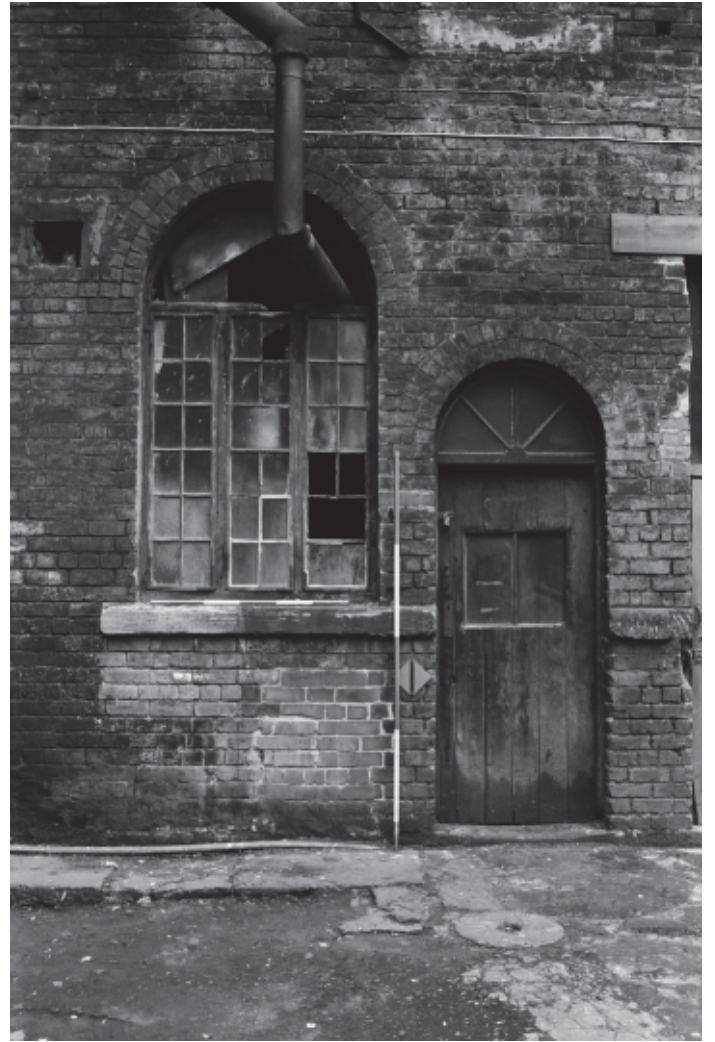


Plate 28: Ground floor entrance to hand forge in West range © University of Sheffield. Reproduced by permission



Plate 29: Second floor drive channel with wooden drum still in situ, West range © University of Sheffield. Reproduced by permission



Plate 30: Riveted metal grinding trough found beneath concrete floor of former Arundel Forge facing Brown Lane © University of Sheffield. Reproduced by permission



Plate 31: Wall scar of diagonal belt drive leading to high level wall box © University of Sheffield. Reproduced by permission

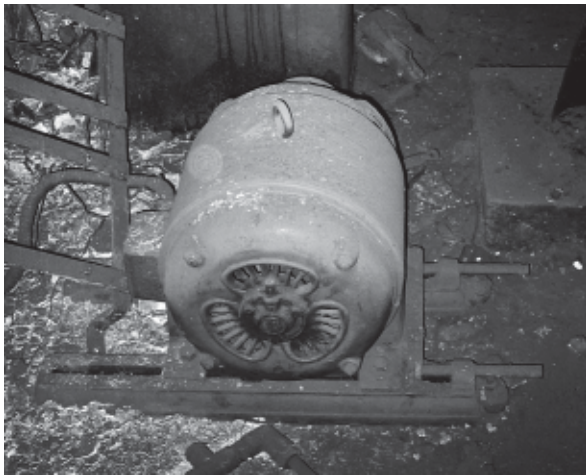


Plate 32: Inserted electric motor powering concrete grinding troughs on second floor of the former Arundel Street Forge (building G) © University of Sheffield. Reproduced by permission



Plate 33: Interpretative display boards in second floor grinding workshop © University of Sheffield. Reproduced by permission